



DESIGNER AND MANUFACTURER SINCE 1986

GECITECH specializes in the manufacture of flexible hoses and fittings for the food, chemical, pharmaceutical, biotechnology and cosmetic industries.

The wide product range including silicone, rubber and thermoplastic flexible hoses, as well as stainless steel fittings, covers all our customers' needs.

Our products meet the most demanding requirements of international standards: FDA, USP BfR, Atex and the EU Directives 1935/2004 and 10/2011. The production process is compliant with the Good Manufacturing Practices (GMP) defined by the ANSM (National Agency for Medicines and health products Security) and the Guidelines Eudralex.



Our company has also been ISO 9001 certified since 2005.

Thanks to our pioneering R&D department, staffed with highly qualified engineers, GECITECH can meet any customer's specification by designing and improving co-engineering solutions. This expertise enables the development of patented innovative products.

Our products are manufactured and assembled in our workshops by our qualified and experienced staff, trained in the latest technologies.



Our production site in Mions is over 26 000 m².

FACILITIES



Our cleanroom:
900 m² in
a controlled
atmospheric area
for silicone hose
production



Stainless
steel fittings
production



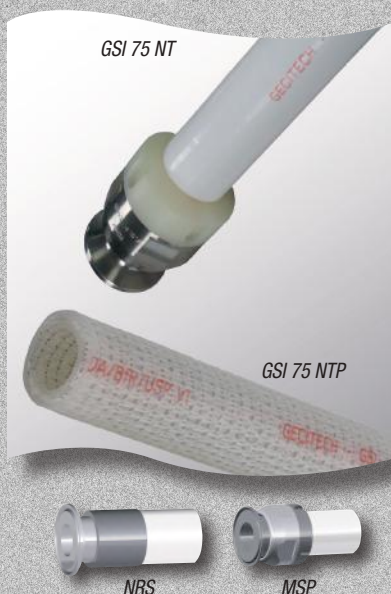
Assembly
room equipped
with the latest
technologies



Cleaning
station using
reverse
osmosis water

GSi® 75 NT and NTP

SILICONE



Fully extruded silicone, textile reinforcements and HR* stainless steel wiring. NT version white platinum cured. NTP version natural platinum cured..

PRODUCT HIGHLIGHTS

- Autoclavable hose.
- High working temperature.
- Good vacuum capability.
- High flexibility and robustness.

NT model

- Recommended for food and pharmaceutical applications.

NTP model

- Recommended for food, pharmaceutical and biotechnology applications.
- Cytotoxicity, Haemolysis, European Pharmacopoeia.

- Available from ND 8 to 102 mm (0.3 to 4.0 inches).
- Working pressure from 6 to 20 bar (87 to 290 PSI).
- Working temperature range from -60°C to +180°C (-76°F to 356°F).
- Standard manufacturing length 5.70 m (18.7 feet).

GSi® 75 NT
et NTP



GSi® 75 NTP



Assembly options (See page 13)

316L stainless steel swaged fittings are monoblocs (no welds) in accordance with the NRS® design (Non Retention System). Hoses can be also supplied with reusable MSP® fittings (up to ND51). Many types of fittings are also available upon request (SMS, DIN, CLAMP, RJT, ISS, FIL, GAS, NPT, JIC, FLANGES, etc.).

*HR: Highly resistant against stress corrosion cracking.

TRESSIL®

SILICONE



Fully extruded silicone, textile braid reinforcement, platinum cured.

PRODUCT HIGHLIGHTS

- Very flexible hose for the transfer of food, pharmaceutical and biotechnology products, even at high temperature.

- Autoclavable hose.

- Available from ND 3 to 32 mm (0.12 to 1.26 inches).
- Working pressure from 4 to 15 bar (58 to 218 PSI).
- Working temperature range from -60°C to +180°C (-76°F to 356°F).
- Standard length 25 m (82 feet), 10m (33 feet) from ND 25 (1 inch).
- Other lengths available on request.
- No vacuum capability.



Assembly options (See page 13)

The 316L stainless steel swaged fittings are monoblocs (no welds) in accordance with the NRS® design (Non Retention System). The hose can be also supplied with reusable VNRS® fittings (from DN6). Many types of fittings are also available upon request (SMS, DIN, CLAMP, RJT, ISS, FIL, GAS, NPT, JIC, FLANGES, etc.).

SPIRSIL®

SILICONE



Fully extruded platinum cured silicone with stainless steel wiring HR* embedded in the wall.

PRODUCT HIGHLIGHTS

- Hose for food, pharmaceutical and biotechnology fluid return.

- Autoclavable hose.

- Available from ND 13 to 51 mm (0.5 to 2 inches).
- Working temperature range from -60 to +130°C (-76° to 266°F).
- Standard length 5.70 m (18.7 feet).



Assembly options (See page 13)

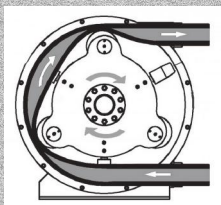
The 316L stainless steel swaged fittings are monoblocs (no welds) in accordance with the NRS® design (Non Retention System). Many types of fittings are also available upon request (SMS, DIN, CLAMP, RJT, ISS, FIL, GAS, NPT, JIC, FLANGES, etc.).

*HR: Highly resistant against stress corrosion cracking.

SILICONE TUBES AND PERISIL® (for peristaltic pumps)



Silicone tube for peristaltic pumps



Extruded silicone tube, platinum cured.

PRODUCT HIGHLIGHTS

- 60/70/80 shores.
- Long manufacturing lengths and wide range of diameters.
- Autoclavable tube.
- High mechanical resistance (PERISIL®).



■ Working temperature from -60° to +180°C (-76° to +356°F).

POLYSIL®

SILICONE / PFA



White smooth PFA, textile reinforcements and stainless steel wiring HR* embedded in the silicone wall. Outer surface is white platinum cured silicone.

PRODUCT HIGHLIGHTS

- Ideal for the transfer of food, pharmaceutical, biotechnology and cosmetic products, and all aggressive products even at high temperatures.
- Autoclavable hose.
- No product migration through the hose wall.
- Easy to clean.
- Good vacuum capability.

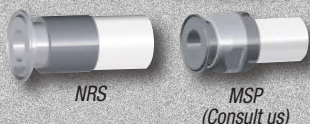
- Available from ND 13 to 63 mm (0.51 to 2.5 inches).
- Working pressure 10 bar (145 PSI).
- Working temperature range from -30 to +130°C (-22 to +266°F).
- Standard length 5.70 m (18.7 feet)



Assembly options (See page 13)

The 316L stainless steel swaged fittings are monoblocs (no welds) in accordance with the NRS® design (Non Retention System). The hose can be also supplied with the reusable MSP® fitting (please contact us). Many types of fittings are also available upon request (SMS, DIN, CLAMP, RJT, ISS, FIL, GAS, NPT, JIC, FLANGES, etc.).

*HR: Highly resistant against stress corrosion cracking.



NRS

MSP
(Consult us)

SILFLON®

SILICONE / PTFE



Smooth PTFE bore, stainless steel braid, textile reinforcements and stainless steel wiring HR* from ND 13 (0.51 inches). White silicone cover.

PRODUCT HIGHLIGHTS

- For the transfer of all food products, including oily and fatty products, liquid chemical products, gas (except melted down alkaline metal and fluorinated gas) and permanent steam.
- Excellent thermal protection.

- Available from ND 6 to 25 mm (0.25 to 1 inch).
- Working pressure from 40 to 120 bar (580 to 1740 PSI).
- Working temperature range from -50 to +230°C (-58 to +446°F).
- Standard manufacturing length 22 m (72.2 feet). (Except ND 25mm (1") which is 5.75m (18.9 ft)).
- No vacuum capability



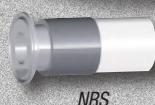
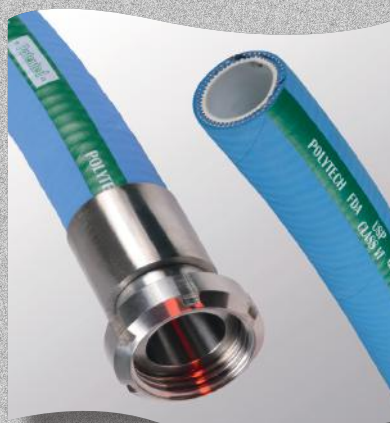
Assembly options (See page 13)

The 316L stainless steel swaged fittings are monoblocs (no welds) in accordance with the NRS® design (Non Retention System). Many types of fittings are also available upon request (SMS, DIN, CLAMP, RJT, ISS, FIL, GAS, NPT, JIC, FLANGES, etc.).

*HR: Highly resistant against stress corrosion cracking.



NRS

POLYTECH®
PFA / EPDM


NRS

White smooth PFA bore with textile ply and galvanized steel wires embedded in the wall. Outer surface is blue EPDM (other colours available upon request).

PRODUCT HIGHLIGHTS

● Highly resistant hose for the transfer of food, pharmaceutical, cosmetic and chemical products.

- Available from ND 13 to 100 mm (0.51 to 4 inches).
- Working pressure 10 bar (145 PSI).
- Working temperature range from -30 to +130°C* (-22 to +266°F).


Assembly options (See page 13)

The 316L stainless steel swaged fittings are monoblocs (no welds) in accordance with the NRS® design (Non Retention System). The hose can be also supplied with reusable fittings and ferrules. Many types of fittings are also available upon request (SMS, DIN, CLAMP, RJT, ISS, FIL, GAS, NPT, JIC, FLANGES, etc.).

POLYTECH® CP (Carbone Pharma)
PFA / EPDM


NRS

White PFA, ultra smooth and non-adherent, textile ply and galvanized steel wires embedded in the wall. Blue/black marbled finish and antistatic.

PRODUCT HIGHLIGHTS

● Robust hose for the transfer of food, pharmaceutical and chemical products using bipolar solvents in explosive areas.

- Available from ND 13 to 100 mm (0.51 to 4 inches).
- Working pressure 10 bar (145 PSI).
- Working temperature range from -30 to +130°C * (-22 to +266°F).
- Standard manufacturing length 20 m (66 feet).



Atex validated by INERIS in accordance with the certification N° 21795.2X/09 (Assembly by GECITECH).

Assembly options (See page 13)

The 316L stainless steel swaged fittings are monoblocs (no welds) in accordance with the NRS® design (Non Retention System). Many types of fittings are also available upon request (SMS, DIN, CLAMP, RJT, ISS, FIL, GAS, NPT, JIC, FLANGES, etc.).

POLYTECH® CC (Carbone Chimie)
PFA / EPDM


NRS

Black PFA smooth antistatic with textile ply and galvanized steel wires embedded in the wall. Blue/black marbled finish and antistatic.

PRODUCT HIGHLIGHTS

● Robust hose for the transfer of all products including the most aggressive fluids in explosive areas.

- Available from ND 13 to 100 mm (0.51 to 4 inches).
- Working pressure 10 bar (145 PSI).
- Working temperature range from -30 to +130°C* (-22 to +266°F).
- Standard manufacturing length 20 m (66 feet).



Atex validated by INERIS in accordance with the certification N° 21795.2X/09 (Assembly by GECITECH).

Assembly options (See page 13)

The 316L stainless steel swaged fittings are monoblocs (no welds) in accordance with the NRS® design (Non Retention System). Many types of fittings are also available upon request (SMS, DIN, CLAMP, RJT, ISS, FIL, GAS, NPT, JIC, FLANGES, etc.).

* For temperature requirements above 100°C (212°F), please contact us.

FLEXAL®

UPE / ELASTOMER



NRS



Reusable ferrules

UPE translucent film inside, textile reinforcement and galvanized steel wires embedded in the wall. Outer surface red or blue NR canvas printing.

PRODUCT HIGHLIGHTS

- Very flexible hose specially designed for the transfer of food liquids (fruit juices, beer, wine...).
- Ideal for distilled products with a high

alcohol level (up to 99%).

- TDG authorization (Transportation of Dangerous Goods).

- Available from ND 25 to 76 mm (1 to 3 inches).
- Working temperature range from -30°C to +85°C (-22 to 185°F).
- Standard manufacturing length 40m (131 feet).
- Working pressure 10 bar (145 PSI).

BNIC
(French
Inter-trade
COGNAC
Office)

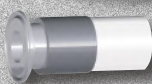


Assembly options (See page 13)

Equipped with 316L stainless steel swaged fittings (no welds) in accordance with the NRS™ design (Non Retention System). Many types of fittings are also available upon request (SMS, DIN, CLAMP, RJT, ISS, FIL, GAS, NPT, JIC, FLANGES, etc.).

VIEWLINE®

MFA



NRS

Fluorinated thermoplastic, translucent to view the product transfer.

PRODUCT HIGHLIGHTS

- Material shatter resistant, chemically inert to avoid contamination of the transferred product. Suitable for food, pharmaceutical, cosmetic and chemical applications. It is also tasteless and odorless.

- Can be externally reinforced with a stainless steel safety guard according to the ratio pressure / temperature applications.

- Can be assembled in longer length for tank level applications. (glass gauge replacement).

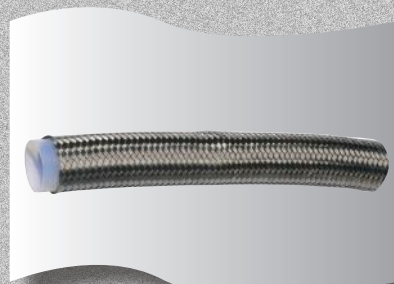
- Available from ND 25 to 100 mm (1 to 4 inches).
- Working pressure from 4 to 8 bar (58 to 116 PSI).
- Working temperature range from -40 to +150°C (-40 to 302°F).
- Available in longer length for diameter 20x24 for level gauge (replacement of the glass level gauge).



Assembly options (See page 13)

The 316L stainless steel swaged fittings are monoblocs (no welds) in accordance with the NRS® design (Non Retention System). Many types of fittings are also available upon request (SMS, MACON, DIN, CLAMP, RJT, ISS, FIL, GAS, NPT, JIC, FLANGES, etc.).

SMOOTHBORE PTFE HOSE WITH STAINLESS STEEL BRAID



NRS

Smooth PTFE bore hose. Outer surface reinforced by a 304L stainless steel braid.

PRODUCT HIGHLIGHT

- Ideal for the transfer of chemical products, steam circuit even at high temperature and pressure.

- Non-adherent characteristic allows a good flow of the transfer fluid with minimum pressure loss.

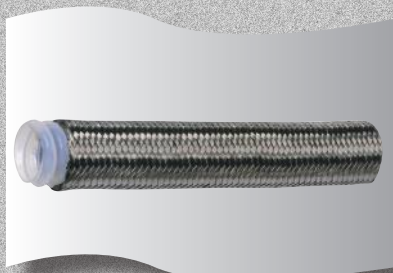
- Available from ND 5 to 25 mm (0.2 to 1 inch).
- Working pressure from 20 to 264 bar (290 to 3829 PSI).
- Working temperature range from -70 to +260°C (-94 to +500°F).
- No vacuum capability.



Assembly options (See page 13)

The 316L stainless steel swaged fittings are monoblocs (no welds) in accordance with the NRS® design (Non Retention System). Many types of fittings are also available upon request (SMS, DIN, CLAMP, RJT, ISS, FIL, GAS, NPT, JIC, FLANGES, etc.).

CONVOLUTED PTFE HOSE WITH STAINLESS STEEL BRAID



PTFE convoluted hose. Outer surface reinforced by a 304L stainless steel braid.

PRODUCT HIGHLIGHTS

- Ideal for the transfer of aggressive products in dynamic application.

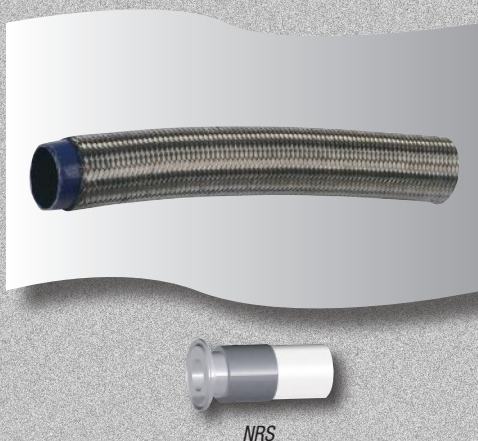
- Available from ND 6 to 50 mm (0.25 to 2 inches).
(For higher ND, consult us).
- Working pressure from 23 to 172 bar (334 to 2495 PSI).
- Working temperature range from -70 to +260°C (-94 to +500°F).
- For vacuum applications, contact us.



Assembly options (See page 13)

The 316L stainless steel swaged fittings are monoblocs (no welds) in accordance with the NRS® design (Non Retention System). Many types of fittings are also available upon request (SMS, DIN, CLAMP, RJT, ISS, FIL, GAS, NPT, JIC, FLANGES, etc.).

SMOOTHBORE CARBON-FILLED PTFE HOSE WITH STAINLESS STEEL BRAID



Smoothbore carbon-filled PTFE. Outer surface reinforced by a 304L stainless steel braid.

PRODUCT HIGHLIGHTS

- Ideal for the transfer of chemical products, solvents and steam both at high temperature and pressure in explosive areas.
- The non-stick quality of the PTFE allows good flow of the conveyed liquids with minimum pressure loss.

- Available from ND 5 to 25 mm (0.2 to 1 inch).
- Working pressure from 80 to 264 bar (1160 to 3829 PSI).
- Working temperature range from -70 to +260°C (-94 to +500°F).



Assembly options (See page 13)

The 316L stainless steel swaged fittings are monoblocs (no welds) in accordance with the NRS® design (Non Retention System). Many types of fittings are also available upon request (SMS, DIN, CLAMP, RJT, ISS, FIL, GAS, NPT, JIC, FLANGES, etc.).

Atex validated by INERIS in accordance with the certification n°87830-1/07 (Assembly by GECITECH).

CONVOLUTED CARBON-FILLED PTFE HOSE



Convoluted carbon-filled PTFE. Outer surface reinforced by a 304L stainless steel braid.

PRODUCT HIGHLIGHTS

- For applications requiring an excellent temperature consistency.
- Hose with high flexibility and resistance to solvents and other chemical agents even in explosive areas.

- Available from ND 6 to 50 mm (0.25 to 2 inches).
- Working pressure from 23 to 172 bar (334 to 2495 PSI).
- Working temperature range from -70 to +260°C (-94 to +500°F).
- For vacuum applications, contact us.



Assembly options (See page 13)

The 316L stainless steel swaged fittings are monoblocs (no welds) in accordance with the NRS® design (Non Retention System). Many types of fittings are also available upon request (SMS, DIN, CLAMP, RJT, ISS, FIL, GAS, NPT, JIC, FLANGES, etc.).

Atex validated by INERIS in accordance with the certification n°87830-1/07 (Assembly by GECITECH).

DEPOTAL®

EPDM

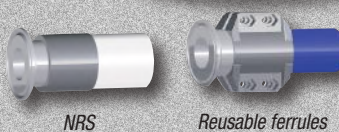


White EPDM with textile plies and embedded in the wall galvanized steel wires reinforcement. Outer surface blue EPDM.

PRODUCT HIGHLIGHTS

- Very robust hose recommended for all types of food products except for oily and fatty products.
- Excellent rub and abrasion resistance.
- Good vacuum capability.

- Available from ND 20 to 203 mm (0.79 to 8 inches).
- Working pressure from 6 to 10 bar (87 to 145 PSI).
- Working temperature range from -30 to +120°C (-22 to +248°F).
- Standard manufacturing length 40 m (131 feet).



NRS

Reusable ferrules

Assembly options (See page 13)

The 316L stainless steel swaged fittings are monoblocs (no welds) in accordance with the NRS® design (Non Retention System). The hose can be also supplied with reusable fittings and ferrules. Many types of fittings are also available upon request (SMS, DIN, CLAMP, RJT, ISS, FIL, GAS, NPT, JIC, FLANGES, etc.).

BLUTECH®

BUTYL

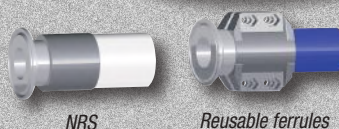


Clear Butyl with textile plies and embedded in the wall galvanized steel wires reinforcement. Outer surface blue Butyl.

PRODUCT HIGHLIGHTS

- Very flexible hose recommended for the transfer of beverage, beer and distilled drinks up to 96% alcohol.
- Will not contaminate the products transferred. Tasteless and odorless.
- Good vacuum capability.

- Available from ND 19 to 102 mm (0.75 to 4 inches).
- Working pressure from 5 to 8 bar (72.5 to 116 PSI).
- Working temperature range from -30° to +80° (-22° to 176° F).
- Standard manufacturing length 40 m (131 feet).



NRS

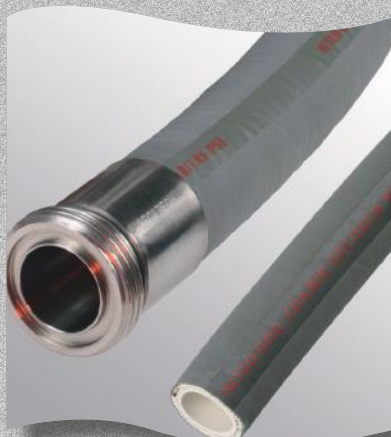
Reusable ferrules

Assembly options (See page 13)

The 316L stainless steel swaged fittings are monoblocs (no welds) in accordance with the NRS® design (Non Retention System). The hose can be also supplied with fittings and reusable ferrules. Many types of fittings are also available upon request (SMS, DIN, CLAMP, RJT, ISS, FIL, GAS, NPT, JIC, FLANGES, etc.).

NITRIFOOD®

NITRILE



White NBR with textile plies and embedded in the wall galvanized steel wires reinforcement. Outer surface light grey Chloroprene.

PRODUCT HIGHLIGHTS

- Robust hose recommended mostly for oily and fatty products.
- Excellent rub and abrasion resistance.
- Good vacuum capability.

- Available from ND 10 to 102 mm (0.4 to 4 inches).
- Working pressure 10 bar (145 PSI).
- Working temperature range from -30 to +90°C (-22 to 194°F).
- Standard manufacturing length 40 m (131 feet).



NRS

Reusable ferrules

Assembly options (See page 13)

The 316L stainless steel swaged fittings are monoblocs (no welds) in accordance with the NRS® design (Non Retention System). The hose can be also supplied with reusable fittings and ferrules. Many types of fittings are also available upon request (SMS, DIN, CLAMP, RJT, ISS, FIL, GAS, NPT, JIC, FLANGES, etc.).

MAXIFOOD®**EPDM**

NRS

White EPDM with synthetic plies reinforcement, high tenacity. Outer surface grey smooth synthetic rubber.

PRODUCT HIGHLIGHTS

- Very robust hose without wire reinforcement.
- Excellent rub and abrasion resistance.
- Recommended for processing most food products, except oily and fatty products.
- Can be used for metal detectors.

- Available from ND 25 to 76 mm (1 to 3 inches).
- Working pressure 10 bar (145 PSI).
- Working temperature range from -35 to +100°C (-31 to +212°F).
- Standard manufacturing length 40 m (131 feet).
- For vacuum applications, contact us.

**Assembly options (See page 13)**

The 316L stainless steel swaged fittings are monoblocs (no welds) in accordance with the NRS® design (Non Retention System). The hose can be also supplied with reusable fittings and ferrules for some diameters (contact us). Many types of fittings are also available upon request (SMS, DIN, CLAMP, RJT, ISS, FIL, GAS, NPT, JIC, FLANGES, etc.).

VAPROCESS®**EPDM**

NRS

White EPDM with synthetic plies reinforcement. Outer surface micro perforated blue EPDM.

PRODUCT HIGHLIGHTS

- Very flexible hose without wire reinforcement.
- Recommended for processing most food products, except oily and fatty products.
- Ideal for cleaning hose reel applications (except slaughterhouses).
- Caution: no continuous steam application.

- Available from ND 13 to 76 mm (0.5 to 3 inches)
- Working pressure 7 bar at 170°C and 20 bar at 95°C (102 PSI at +338°F and 290 PSI at 203°F), depending on duration.
- Working temperature range from -40 to +170°C (-40 to 338°F).
- Standard length manufacturing 40 m (131 feet).
- No vacuum capability.

**Assembly options (See page 13)**

The 316L stainless steel swaged fittings are monoblocs (no welds) in accordance with the NRS® design (Non Retention System). Many types of fittings are also available upon request (SMS, DIN, CLAMP, RJT, ISS, FIL, GAS, NPT, JIC, FLANGES, etc.).

VTA®**BUTYL**

NRS

White Butyl with steel braid reinforcement embedded in the wall. Outer surface microperforated grey Butyl.

PRODUCT HIGHLIGHTS

- Very flexible and robust hose improving operator safety.
- A versatile hose compatible with most food products in high pressure and non-permanent steam.
- Long manufacturing lengths.

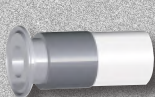
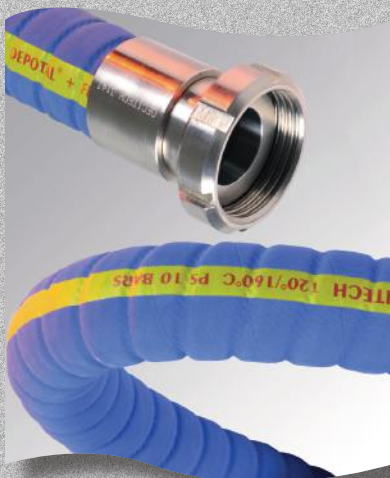
- Available from ND 13 to 38 mm (0.5 to 1.5 inches).
- Working pressure 8 bar at 170°C and 30 bar at 95°C (116 PSI at +338°F and 435 PSI at 203°F), depending on duration. Contact us for temperature requirements over 95°C (203°F).
- Working temperature range from -40 to +170°C (-40° to +338°F).
- Standard manufacturing length 60 m (196.8 feet).

**Assembly options (See page 13)**

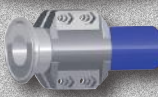
The 316L stainless steel swaged fittings are monoblocs (no welds) in accordance with the NRS® design (Non Retention System). Many types of fittings are also available upon request (SMS, DIN, CLAMP, RJT, ISS, FIL, GAS, NPT, JIC, FLANGES, etc.).

DEPOTAL ANNELE®

EPDM



NRS



Reusable ferrules

White EPDM with synthetic reinforcement ply and steel wire. Outer surface corrugated blue EPDM rubber.

PRODUCT HIGHLIGHTS

- High flexibility for flow control panel, etc.
- Robust hose recommended for all types of food products except oily and fatty products.
- Excellent rub and abrasion resistance.
- Good vacuum capability.

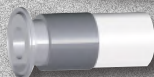
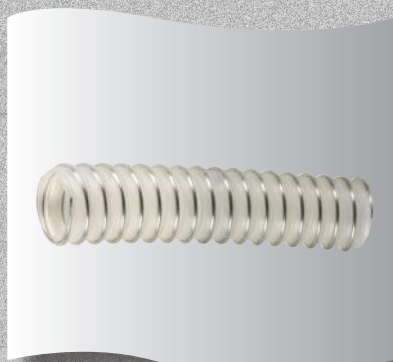
- Available from ND 25 to 152 mm (1 to 5.98 inches).
- Working pressure 10 bar (145 PSI).
- Working temperature range from -30 to +120°C (-22 to +248°F).
- Standard manufacturing length 40 m (131 feet).



Assembly options (See page 13)

The 316L stainless steel swaged fittings are monoblocs (no welds) in accordance with the NRS® design (Non Retention System). Many types of fittings are also available upon request (SMS, DIN, CLAMP, RJT, ISS, FIL, GAS, NPT, JIC, FLANGES, etc.).

GECIFLEX PU/AL/EX Polyurethane reinforced hose



NRS

100% translucent and antistatic polyurethane polyester with stainless steel wire without halogens or plasticizers.

PRODUCT HIGHLIGHTS

- Powder suction and discharge hose for food, pharmaceutical and cosmetic industries requiring a food contact certification
- for explosive areas.
- High resistance to UV and ozone.

- Available from ND 38 to 100 mm (1.5 to 4 inches).
- Working temperature range from -40 to +90°C (-40 to 194°F).
- Standard manufacturing length 10 m (32.8 feet).

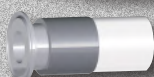
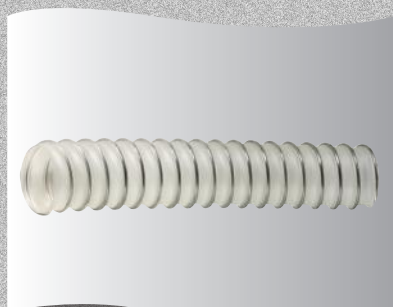


Atex validated by INERIS in accordance with the certification n°24576/12 (Assembly by GECITECH).

Assembly options (See page 13)

The 316L stainless steel swaged fittings are monoblocs (no welds) in accordance with the NRS® design (Non Retention System). Many types of fittings are also available upon request (SMS, DIN, CLAMP, RJT, ISS, FIL, GAS, NPT, JIC, FLANGES, etc.).

GECIFLEX PU/AL Polyurethane reinforced hose



NRS

100% translucent polyurethane polyester with stainless steel wire without halogens or plasticizers.

PRODUCT HIGHLIGHTS

- Extraction and transfer of powder, dust.
- High resistance to UV and ozone, with a small bend radius and great flexibility.

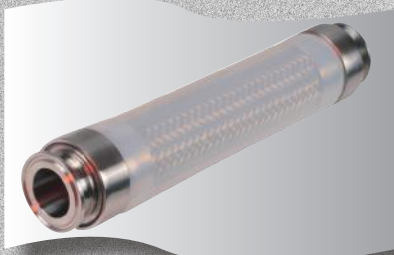
- Available from ND 32 to 200 mm (1.3 to 8 inches).
- Working temperature range from -40 to +90°C (-40 to 194°F).
- Standard manufacturing length 10 m (32.8 feet).



Assembly options (See page 13)

The 316L stainless steel swaged fittings are monoblocs (no welds) in accordance with the NRS® design (Non Retention System). Many types of fittings are also available upon request (SMS, DIN, CLAMP, RJT, ISS, FIL, GAS, NPT, JIC, FLANGES, etc.).

OUTER PROTECTIONS



Silicone sleeve: Extruded silicone sleeve translucent or white (other colors upon request).

PRODUCT HIGHLIGHTS

- Easy cleaning of the outer surface of the hose.
- Visualization of possible leaks.
- Protection against dirt in the metal braids.
- Surface thermal protection.
- Finish with stainless-steel over-rings at both ends.



Insulating hose: Insulating sleeve made of extruded elastomer foam.



PRODUCT HIGHLIGHTS

- Thermal protection of the hose, limits thermal shocks between inside and outside.
- Limits the heat loss of the conveyed product.

■ Working temperature range from -50 to +150°C (-58 to +302°F).

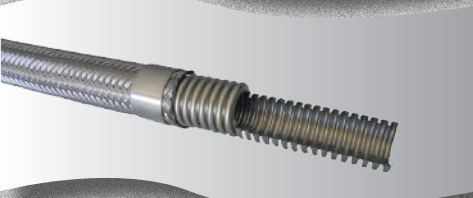
STAINLESS-STEEL CORRUGATED FLEXIBLE HOSE



304L stainless steel braid with 316L stainless steel inner wall (mechanical forming or hydroforming).

PRODUCT HIGHLIGHTS

- Ideal for the transfer of liquid or gas.
- From 5,000 to 10,000 cycles.
- High security in hard conditions.
- High sealing.
- Very high resistance against mechanical stress (5 times higher than the EN ISO 10380 norm).



- Available from ND 6 to 150 mm.
- Working temperature from -273° to +600°C (-459°F to 1112°F).
- 3 corrugated hoses ranges, from mechanical forming to extra-flexible hydroforming.

Assembly options (See page 13)

Equipped with 316L stainless steel fittings. Many styles of fittings available (GAZ, DIN2353, NPT, flanges, etc.).

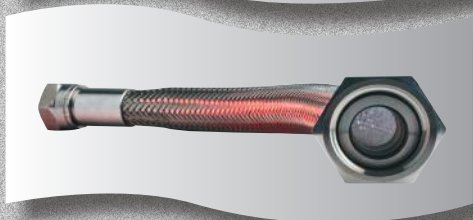
PTFE HOSE VERY HIGH PRESSURE



Very high-pressure hose made with PTFE antistatic resin and reinforced by a 304L stainless steel braid, high tenacity.

PRODUCT HIGHLIGHTS

- Perfect solution for the transfer of chemical products, solvents, steam both at high temperature and pressure.
- Transfer of food products, in accordance with the regulation FDA 21 CFR 177 1550.
- Non-adherent PTFE allowing a good flow of the conveyed liquids, with a minimum pressure loss.
- Can be used in explosive areas without restriction. INERIS validation n° 87830-1/07.



- Available from ND 6 to 25 mm (0.23 to 1 inches).
- Working pressure 350 bar (5076 PSI).
- Working temperature range from -70° à +260°C (-56° to +126°F).



NRS



Atex validated by INERIS in accordance with the certification n°87830-1/07 (Assembly by GECITECH).

Assembly options (See page 13)

Can be equipped with 316L stainless steel fittings. Many styles of fittings available: GAZ, NPT, DIN2353, etc.

FIBREGLASS SLEEVE COATED WITH SILICONE



PRODUCT HIGHLIGHTS

- Protects the operators from heat.
- Protects the hose from ambient temperature.
- Finishing with stainless steel over-rings at both ends.

Complies with SAE AS1072 standard.

DOUBLE JACKET HOSE

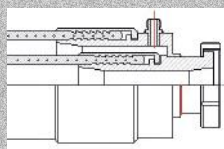


Double jacket hose: transfer of product through the inner hose and fluid or air circulation system in the outer hose.

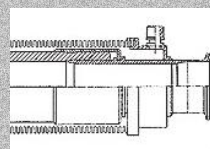
PRODUCT HIGHLIGHTS

- Ideal to maintain the transferred liquid temperature thanks to hot water, cold water or air circulation system.
- Can be used with all types of hoses (consult us).

Options:



Double jacket hose with elastomer both inside and outside.



Double jacket hose with elastomer inside and stainless steel corrugated outside.

HEATED HOSE WITH ELECTRICAL WIRE



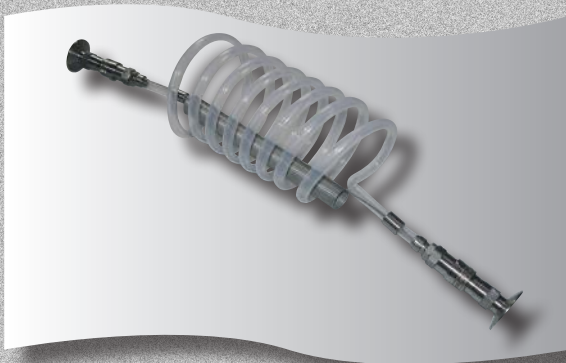
Hose with electrical tracing to maintain fluids at a constant temperature.

PRODUCT HIGHLIGHTS

- Maintains the fluid at the required temperature using electrical wire, with self-regulating system or PT100 sensor and external regulator.
- Insulating foam.
- External silicone sleeve for easy cleaning.
- Finishing with stainless steel over-rings at both ends.

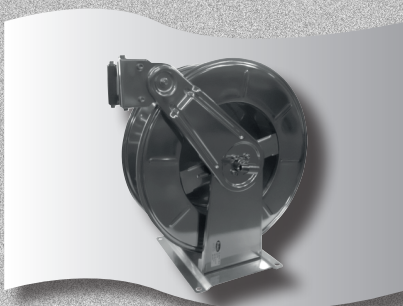
- Regulation by digital or analog thermostat.
- Regulation up to 145°C (293°F) in standard use (for higher temperature, consult us).

COIL



■ This system has been developed by GECITECH to supply air or to transfer fluids in pharmaceutical production rooms.

CLEANING



Stainless steel hose reel used for cleaning operations in food industries.

PRODUCT HIGHLIGHTS

- Stainless steel hose reel with automatic spring return (Additional models available upon request).
- Ideal for washing facilities.
- Wall mounting.



The reel can be assembled with:

- Vaprocess® hose or blue PVC.
- Water guns: red, white, blue or stainless steel.
- Swivel connector and accessories.

BREAK-AWAY COUPLING



The break-away coupling is designed to break away when strong traction is applied, when mobile equipment is moved while still connected to the installation.

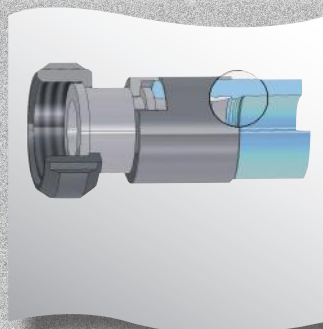
PRODUCT HIGHLIGHTS

- Quick to restore in case of break-away by replacing the 3 screws.
- Effective up to a 45° traction angle (for other configurations, contact us).
- Anti-pull away system, ideal to protect the transfer docks.
- Easy to implement.



- Body: 316L (1.4404) stainless steel.
- Protection: EPDM damper stop + anti-rotation damper stop.
- Available in ND 51, 63.5 and 76 mm (2, 2.5 and 3 inches).

SWAGED FITTING NRS® (Non retention System)



The swaged fitting NRS® can be assembled on all Gecitech hoses.

The fittings are manufactured to avoid diameter differences between the nipple and the pipe in order to ensure a continuous flow of the transferred product. The swaged assembly brings a better non-retention safety by avoiding bacteria entrapment areas.

PRODUCT HIGHLIGHTS

- Bend connections 90° or 45°, as well as the special assemblies are manufactured with orbital type welding. All the straight connections are one part, without welding. The concept of assembly can be cleaned in place (CIP) without disassembling.
- Each flexible hose is tagged with a manufacturing batch number to allow the traceability and the quality monitoring of the flexible. To identify the transfer product, a colour identification can be added onto the hose.
- The inside surface quality of the connections is smooth (roughness <0.8µ) Grinding or electro polishing is also available upon request. After swaging, the outside of the ferrule is polished.
- The NRS® range can be assembled with many styles of fittings (SMS, CLAMP, DIN, RJT, ISS, GAS, etc.).

VNRS® REUSABLE FITTING



VNRS® reusable fitting in 316L stainless steel can be assembled on all our silicone Tressil® hoses.

PRODUCT HIGHLIGHTS

- This screw-on fitting allows assembly and disassembly without special tools and without galling (non-galling rings*). Can be cleaned with normal CIP procedure (Gecitech patented system).
- The connection between hose and fitting is specially designed to avoid differences in diameter and to ensure a continuous flow of the transfer product.
- The VNRS® system avoids bacteriological gaps.
- The VNRS® range can be assembled with many styles of fittings (SMS, CLAMP, DIN, RJT, ISS, GAS, etc.).

*standard ring or autoclavable ring.

MSP® REUSABLE FITTING

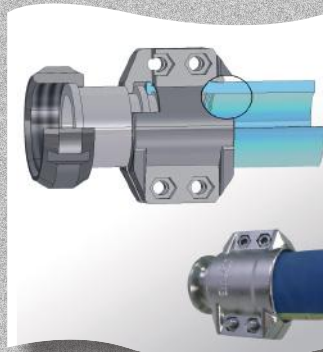


The MSP® fitting is in 316L stainless steel and can be assembled on GSI® 75NT and 75 NTP hoses.

PRODUCT HIGHLIGHTS

- The screw-on fitting allows a perfect compression and holding of the hose extremity, in addition to the locking of the ferrule into the fitting groove making it monobloc like a swaged system.
- To assure the best assembly, we propose an appropriate wrench.
- The MSP® range can be assembled with many styles of fittings (SMS, CLAMP, DIN, RJT, ISS, GAS, etc.).

REUSABLE FERRULES



The reusable ferrules can be assembled on Depotal® and Nitrifood® hoses ranges.

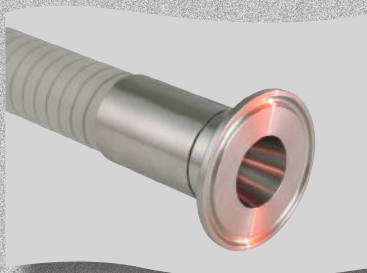
PRODUCT HIGHLIGHTS

- The assembly is easy and fast, made with two half stainless steel or aluminium ferrules with screws and nuts.
- Perfect for maintenance service, these reusable ferrules avoid production down-time with quick repair.
- The reusable ferrules range can be assembled with many styles of fittings (SMS, CLAMP, DIN, RJT, ISS, GAS, etc.).

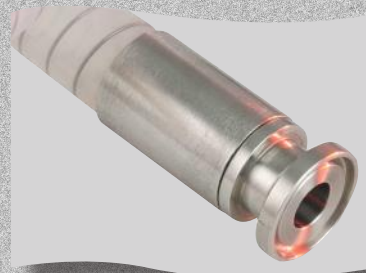
316L stainless steel fittings (Other materials on request)



SMS



**CLAMP SMS, IDF, ISO,
Imperial, Metric**



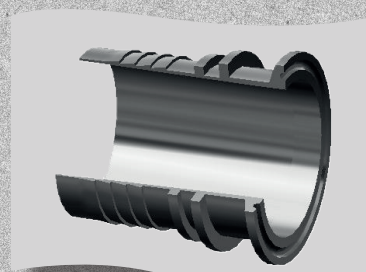
Micro and mini clamp



**DIN 11851 11864-1A
11864-1B**



Welding end fitting



ASME BPE clamp



Flange



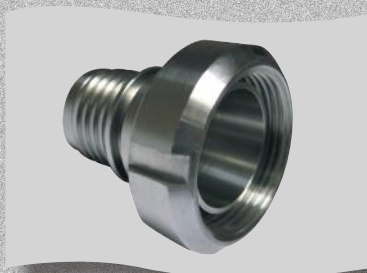
Cam lock fitting



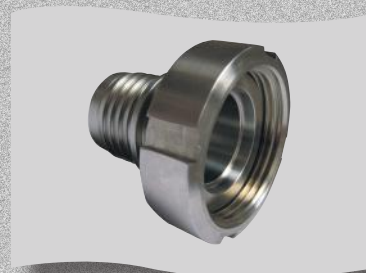
PTFE coating



**Symetrical Guillemin
fitting**



Macon coupling



RJT

316L stainless steel fittings (Other materials on request)



JIC



JIC BSP adaptor



Valve



Inert coupling



Quick release coupling



Flatface coupling



Clamp ring



Bends and reductions



Protection ring



Easy screwing nut



Specially designed part



Specially designed part

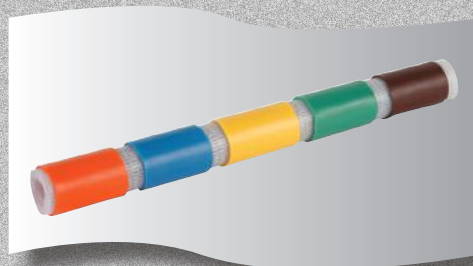
All parts of our production are unitarily tagged with the production batch number.

LASER MARKING



GECITECH has a high performance laser marking equipment which offers many identification possibilities.

COLOUR TRACKING



Color identification by extruded silicone sleeve or shrinkable sleeve. This system allows the hose identification by area of use or by type of transfer product.

HOSES CLEANING



GECITECH is fitted with a cleaning station using softened hot water, rinsing with reverse osmosis water, and drying by filtered hot air circulation.

This cleaning possibility is optional and available upon request.

QUALITY SERVICES

- GECITECH offers material certification type 2.0 and 3.1.
- GECITECH offers three levels of traceability procedures: standard, high and ultra-high depending on customers' needs.
- Electro polishing.
- Roughness: 0.8 μ standard and up to 0.1 μ on request.
- Welds made by our operators are validated NF EN 287-1.
- Bench pressure test report.
- Hoses endoscopy video.

STANDARDS COMPLIANCE



Our products contain no phthalate and no component of animal origin.

TRACE@BILITY BY GECITECH by RFID / Data Matrix



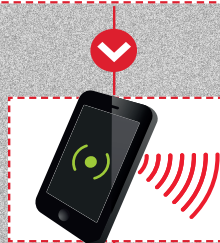
Traceability and maintenance assistance of your equipment software. Compatible with any type of equipment (hoses, valves, pumps, etc.).

PRODUCT HIGHLIGHTS

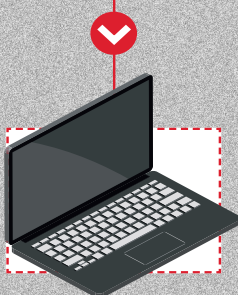
- Quick implementation, no disruption of the existing organization.
- Simple use, accessible to all.
- Scalable for a personalized solution.
- Evolving solution according to needs



- IDENTIFICATION of the items, compliant with any type of equipment by RFID chips, Data Matrix or QR Code labels.



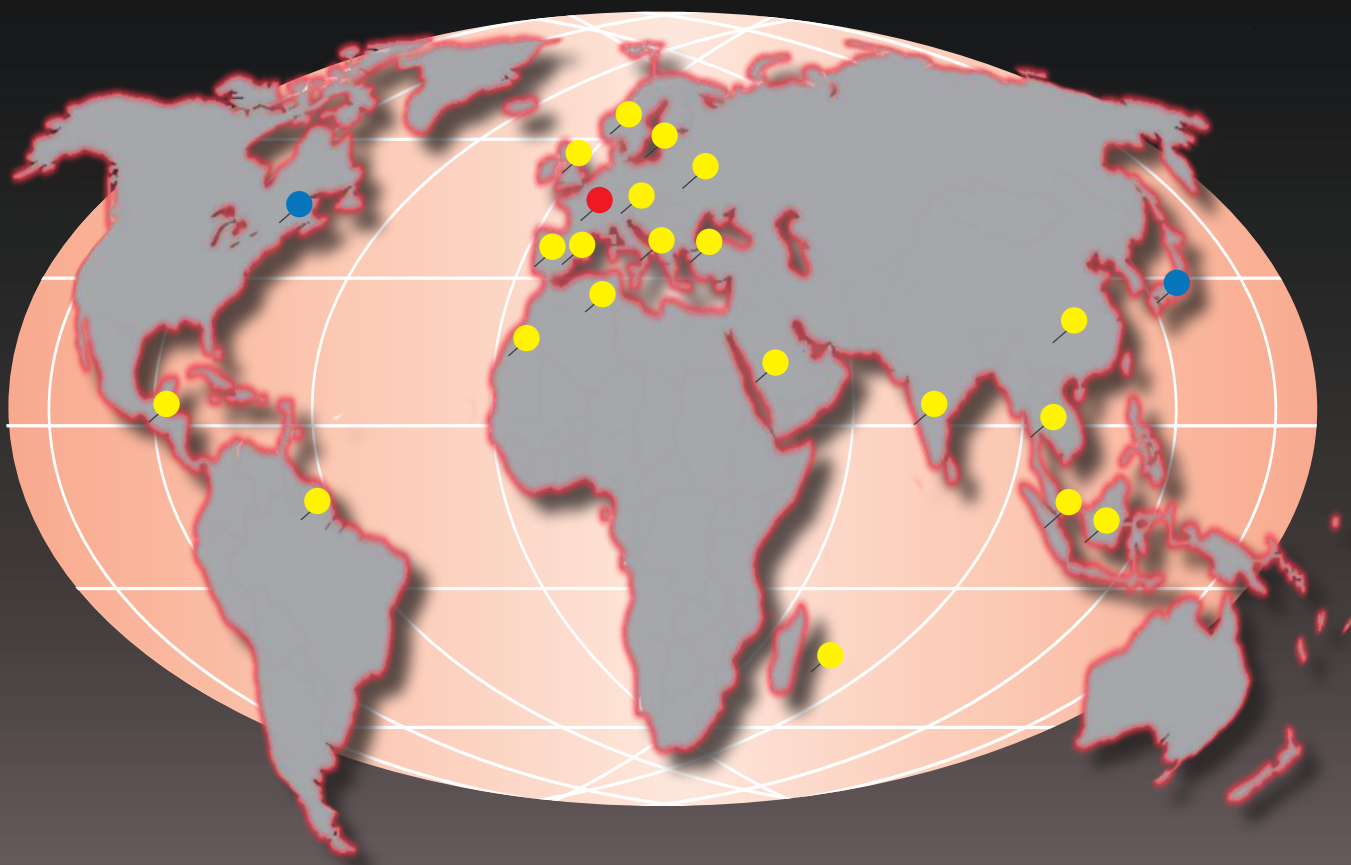
- DIRECT ACCESS TO INFORMATION of the item sheet by scanning the chip or the label with a mobile reader (PDA such as smartphone or 2D scanner connected to a tablet).



- SCHEDULING AND FOLLOW-UP of the maintenance operations with deadline alert system, history of the events, data center (documentary base).

TURNKEY SOLUTION

- Supply of the software Trace@bility by GECITECH
- Supply of the computer equipment: chips, PDA, dedicated computer
- Set up and implementation of the software
- User training
- Technical assistance
- Update management



- Distributor
- Subsidiary / assembly
- Head office / production

www.gecitech.com

Europe Branch - GECITECH Headquarters

Z. A. Pesselière - 10 rue Joseph Marie Jacquard - 69780 MIONS - France
mail@gecitech.fr - ☎ +33 (0)478 206 525 - 📠 +33 (0)478 218 560

USA Branch - GECITECH, LLC

357 Spook Rock Road - Suffern, NY 10901
sales@gecitech.com - ☎ +1 845 357 3900

Japan Branch - GECITECH ASIA CO., Ltd

2-20-1 MISAKI-CHO, CHIYODA-KU - TOKYO 101-0061
mailjp@gecitech.jp - ☎ +81 (3) 3263-7317